

FOCUSLINIA is a 230 V AC linear, available in indoor or outdoor version, monochrome, TRIAC dimmable. It offers a wide choice of lengths from 35 cm. to 2.45 m for the inner version and 1.25 m. for the outer version, in 30cm increments.

ELECTRICAL FEATURES

Voltage	230 VAC
Power	72 W / m.
Control	Phase cut dimmable
Class	Classe I

DIMENSIONS

Width	36 mm
Height	With short bracket : 50 mm
	With long bracket : 90 mm
Length indoor version	350 / 650 / 950 / 1250 / 1550 / 1850 / 2150 / 2450 mm
Length outdoor version	351 / 650 / 950 / 1250 mm

FINISH

Aluminum, black, white, custom on request

OPTICAL FEATURES

Material	PMMA
Angles	15° / 25° / 45° / 10° x 65°
Orientation	With short bracket : +/- 30°
	With long bracket : +/- 120°

PHOTOMETRIC FEATURES

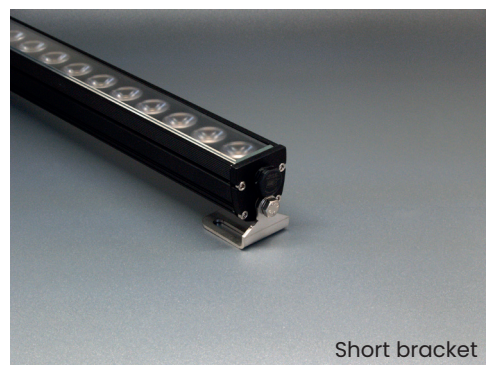
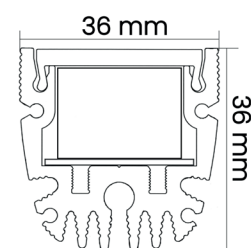
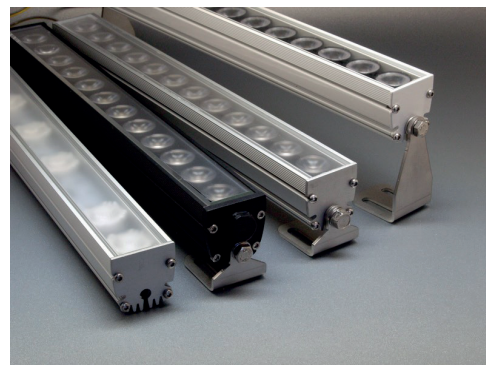
IRC	95
SDCM	2
K / lm - m	2300K / 3960 lm
	2700K / 4620lm
	3000K / 4950lm
	3500K / 4950lm
	4000K / 5280 lm

CERTIFICATION & GUARANTEE

5 Years guarantee

Certifications EC & ETL

Protection IP20 or IP66



Short bracket



Long bracket